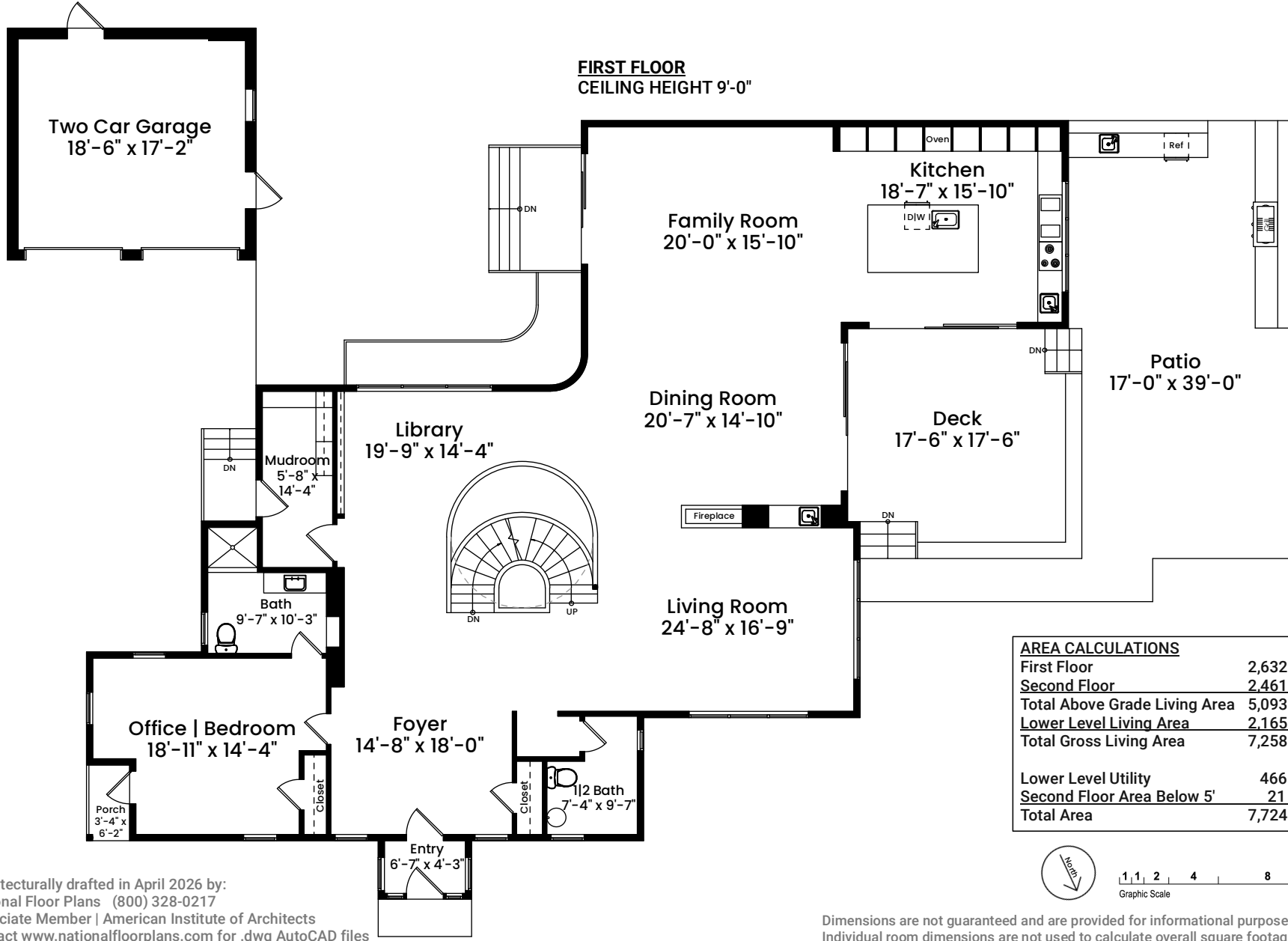


11 Brown Street | Cambridge, MA 02138

FIRST FLOOR
CEILING HEIGHT 9'-0"

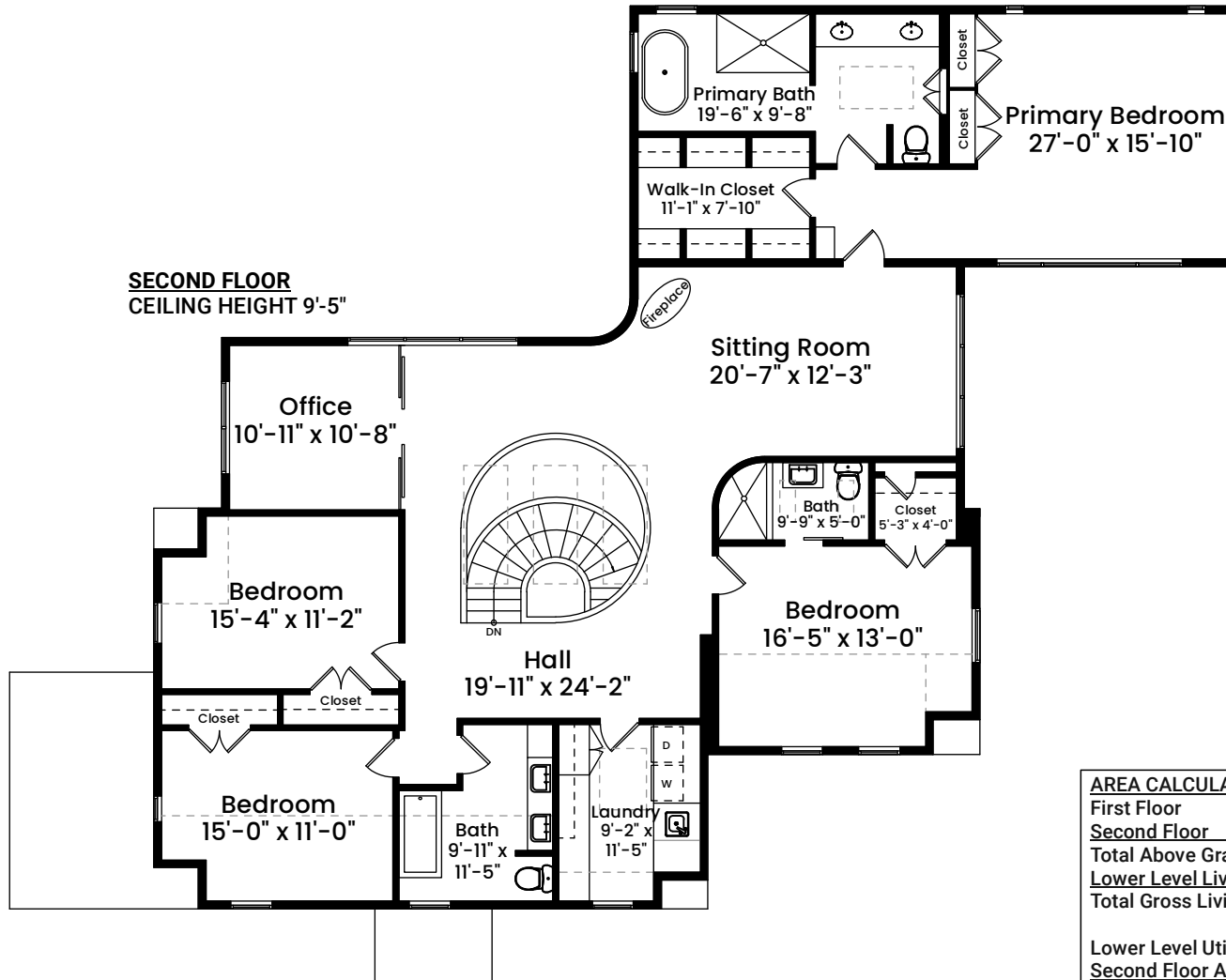


AREA CALCULATIONS	
First Floor	2,632 SF
Second Floor	2,461 SF
Total Above-Grade Living Area	5,093 SF
Lower Level Living Area	2,165 SF
Total Gross Living Area	7,258 SF
Lower Level Utility	466 SF
Second Floor Area Below 5'	21 SF
Total Area	7,724 SF

Architecturally drafted in April 2026 by:
National Floor Plans (800) 328-0217
Associate Member | American Institute of Architects
Contact www.nationalfloorplans.com for .dwg AutoCAD files
or square footage questions about this property.

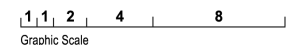
Dimensions are not guaranteed and are provided for informational purposes only.
Individual room dimensions are not used to calculate overall square footage.
National Floor Plans follows ANSI guidelines for calculating square footage.

11 Brown Street | Cambridge, MA 02138



SECOND FLOOR
CEILING HEIGHT 9'-5"

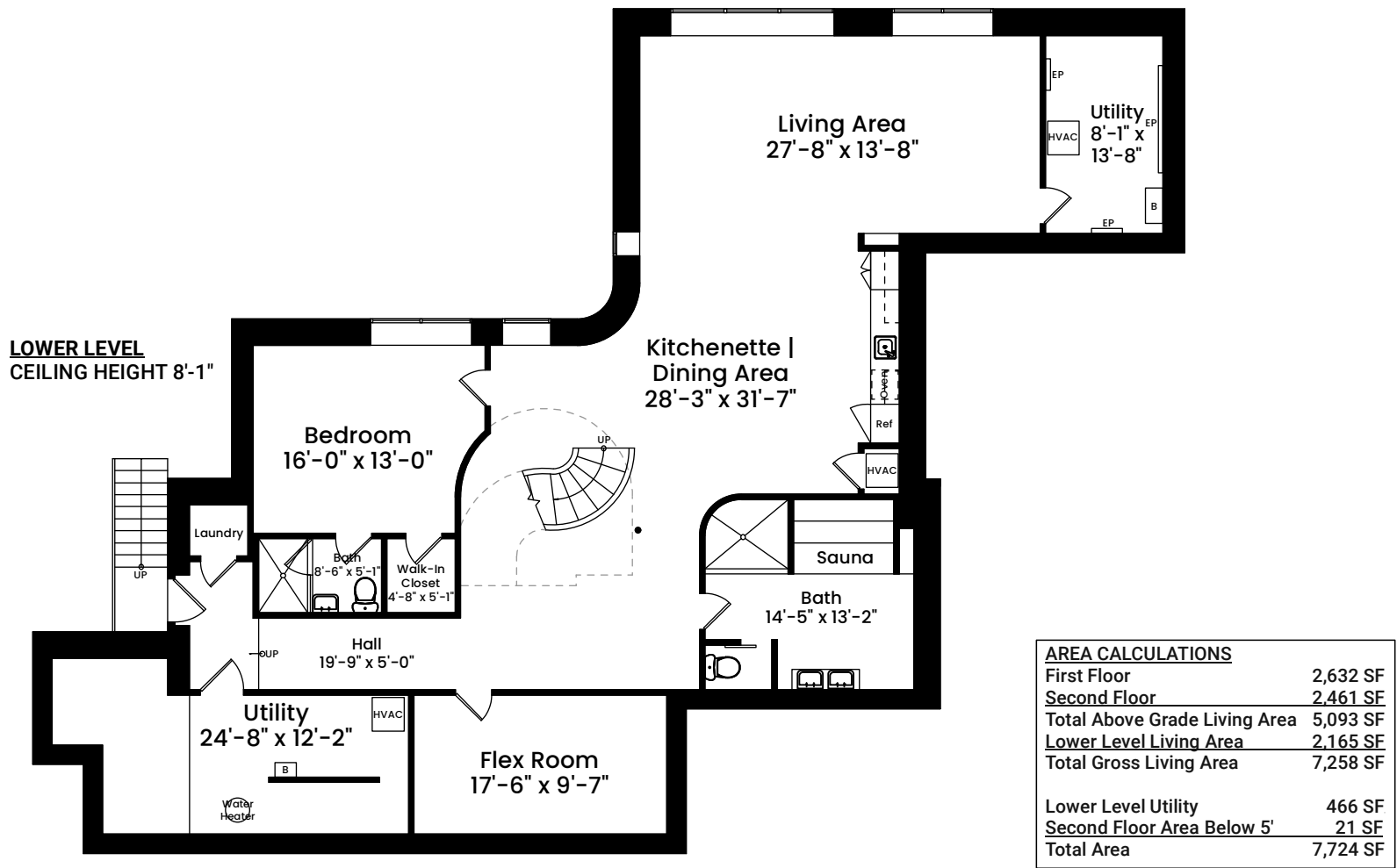
AREA CALCULATIONS	
First Floor	2,632 SF
Second Floor	2,461 SF
Total Above Grade Living Area	5,093 SF
Lower Level Living Area	2,165 SF
Total Gross Living Area	7,258 SF
Lower Level Utility	466 SF
Second Floor Area Below 5'	21 SF
Total Area	7,724 SF



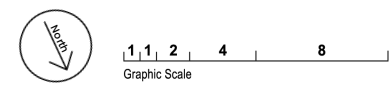
Architecturally drafted in April 2026 by:
National Floor Plans (800) 328-0217
Associate Member | American Institute of Architects
Contact www.nationalfloorplans.com for .dwg AutoCAD files
or square footage questions about this property.

Dimensions are not guaranteed and are provided for informational purposes only.
Individual room dimensions are not used to calculate overall square footage.
National Floor Plans follows ANSI guidelines for calculating square footage.

11 Brown Street | Cambridge, MA 02138



Architecturally drafted in April 2026 by:
 National Floor Plans (800) 328-0217
 Associate Member | American Institute of Architects
 Contact www.nationalfloorplans.com for .dwg AutoCAD files
 or square footage questions about this property.



Dimensions are not guaranteed and are provided for informational purposes only.
 Individual room dimensions are not used to calculate overall square footage.
 National Floor Plans follows ANSI guidelines for calculating square footage.